

NDOR – Construction and Detour Info – May 9, 2012

No map is published - Please use the 511 web area and the [Icons](#) to determine locations. www.511.nebraska.gov

The Items listed are ONLY those that are longer than one (1) month in duration. Travelers may encounter items not listed here.

For Roadwork less than one month in duration - Call 511 or 800-906-9069 or by checking the 511 TEXT VERSION page.

Always check 511 for the most current info.

[SUBSCRIBE HERE](#) to Receive Automatic Emails whenever this Document is Updated.

[Click here for a separate list of 2012 resurfacing projects for I-80 from Lincoln to Western Nebraska](#)

(always check the list below, and 511 to determine if a project has begun)

Highway Number & General Location Info	Additional Info – if available – Restrictions – Type of Work <i>REMEMBER to Check 511 TEXT Page for extra information</i>	Date Entered/ Updated	District	Anticipated Completion
Interstate 80				
Both directions @ Omaha 13 th Street Interchange #454 (Missouri River–24th St.)	Nighttime lane closures, speed zone, 12' width limit	10-22-09	2	Summer 2012
Both directions @ Roscoe Interchange #133	Road construction, lane restrictions, 12' width restriction; speed zones MAP	3-21-12	6	June 2013
Both directions @ Paxton Interchange #145	Road construction MAP	3-21-12	6	June 2013
Both directions @ Gibbon Interchange #285	Road construction, lane restrictions, 12' width restriction	3-21-12	4	Summer 2012
Both directions @ Lincoln North US-77 Interchange #405	Road construction, lane restrictions	9-1-11	1	November 2013
Both directions @ Waverly Interchange #409	Road construction, lane restrictions	9-1-11	1	November 2012
Both directions @ Minden Interchange #279	Road construction, lane restrictions, 11' width restriction	5-2-12	7	
Both directions @ Lincoln I-180 Interchange #401	Road construction, lane closure/shifts MAP	9-26-11	1	Fall 2012
Both directions @ Lincoln-Dawson County Line	Road construction, lane closures, 12' width restriction	3-21-12	6	Fall 2012
Both directions @ Goehner Interchange #373	Road construction, lane closures, 12' width restriction	3-14-12	1	October 2012
Both directions @ Lincoln Airpark Interchange #395	Lane closures, 12' width restriction	3-14-12	1	September 2012
Both directions @ York-Seward County Line	Road construction, lane restrictions, 12' width restriction	4-11-12	4	
Both directions @ Milford Interchange #382	Lane restrictions, 12' width restriction	3-14-12	1	September 2012
Both directions @ Giltner Interchange #324	Road construction, lane restrictions, 12' width restriction, speed zones	4-4-12	4	October 2012
Interstate 680				
Both directions @ Omaha I-80 Interchange	Nighttime lane and ramp closures	5-2-12	2	Summer 2012

Highway Number & General Location Info		Additional Info – if available – Restrictions – Type of Work <i>REMEMBER to Check 511 TEXT Page for extra information</i>	Date Entered/Updated	District	Anticipated Completion
Highways in Nebraska – Numerically					
4	Both directions @ Pawnee-Richardson County Line	Road construction, lane restriction, flaggers and traffic signal, 11' width restriction	5-9-12	1	October 2012
6	Both directions @ 120 th Street in Omaha	Nightly road construction, lane closures	3-21-12	2	October 2012
6	East @ Grafton	Road construction, 12' width restriction	3-28-12	4	
6	East @ Jct. N-10 in Minden	Road construction, 12' width restriction	4-25-12	7	
7	Both directions @ Riverview	Road construction, 12' width restriction	4-25-12	8	May 2012
10	North @ Jct. I-80 Newark-Minden Interchange #279	Road construction, 11' width restriction	4-11-12	7	Fall 2012
10	North @ Jct. N-74 Minden	Road construction, 12' width restriction	4-25-12	7	
14	Both directions @ Jct. S-54A and N-84 east of Verdigre	Roadwork, shoo-fly, speed reduction	6-30-11	3	Spring 2012
14	Both directions @ Jct. I-80 Aurora Interchange #332	Starts May 14 , bridge maintenance, 12' width restriction	5-9-12	4	
15	Both directions @ east Jct. US-275	Road construction, lane restriction with traffic signals, 12' width restriction	4-18-12	3	May 2012
20	Both directions @ south Jct. US-275 southeast of Inman	Road construction	4-25-12	8	June 2012
23	East @ south Jct. US-83 (Maywood – Curtis)	Road construction, flagger and pilot vehicle during the day, lane restriction controlled by traffic signal, 10' width restriction	3-8-12	7	Fall 2012
24	Both directions @ Madison-Stanton County Line	Road construction, lane restrictions, 11' width restriction and 40 Ton restriction, flaggers	4-25-12	3	October 2012
30	East @ west Jct. N-10 and N-44 in Kearney	Road construction, lane restrictions, 12' width restriction	5-2-12	4	June 2012
30	Both directions @ Jct. Gibbon Link L-10C	Road construction, 12' width restriction	4-25-12	4	June 2012
33	Both directions @ east Jct. N-103	Road construction, lane closures, flaggers and pilot vehicle, 12' width restriction	3-28-12	1	October 2012
36	Both directions @ Jct. N-31	Road construction, lane restrictions with flaggers and pilot vehicle during daytime only	4-25-12	2	July 2012
41	Both directions @ Fillmore-Saline County Line	Starts May 14 , lane closure, flaggers and pilot vehicle, 12' width restriction	5-9-12	1	June 2012
45	Both directions @ Platte-Madison County Line	Road construction, lane restrictions, 11' width restriction	4-11-12	3	October 2012
50	Both directions @ Jct. Louisville Lakes Rec. Rd. R-13L	Road construction, lane closures, flaggers and pilot vehicle, 10' width limit	5-2-12	2	Fall 2012
75	Both directions @ Cass – Sarpy County Line (Platteview Road & LaPlatte Road)	Traffic Shift – Click here to see map: MAP	10-28-11	2	Fall 2012
75	Both directions @ Jct. US-136 Auburn	Road construction, lane restrictions, pilot cars and flaggers	3-28-12	1	July 2012

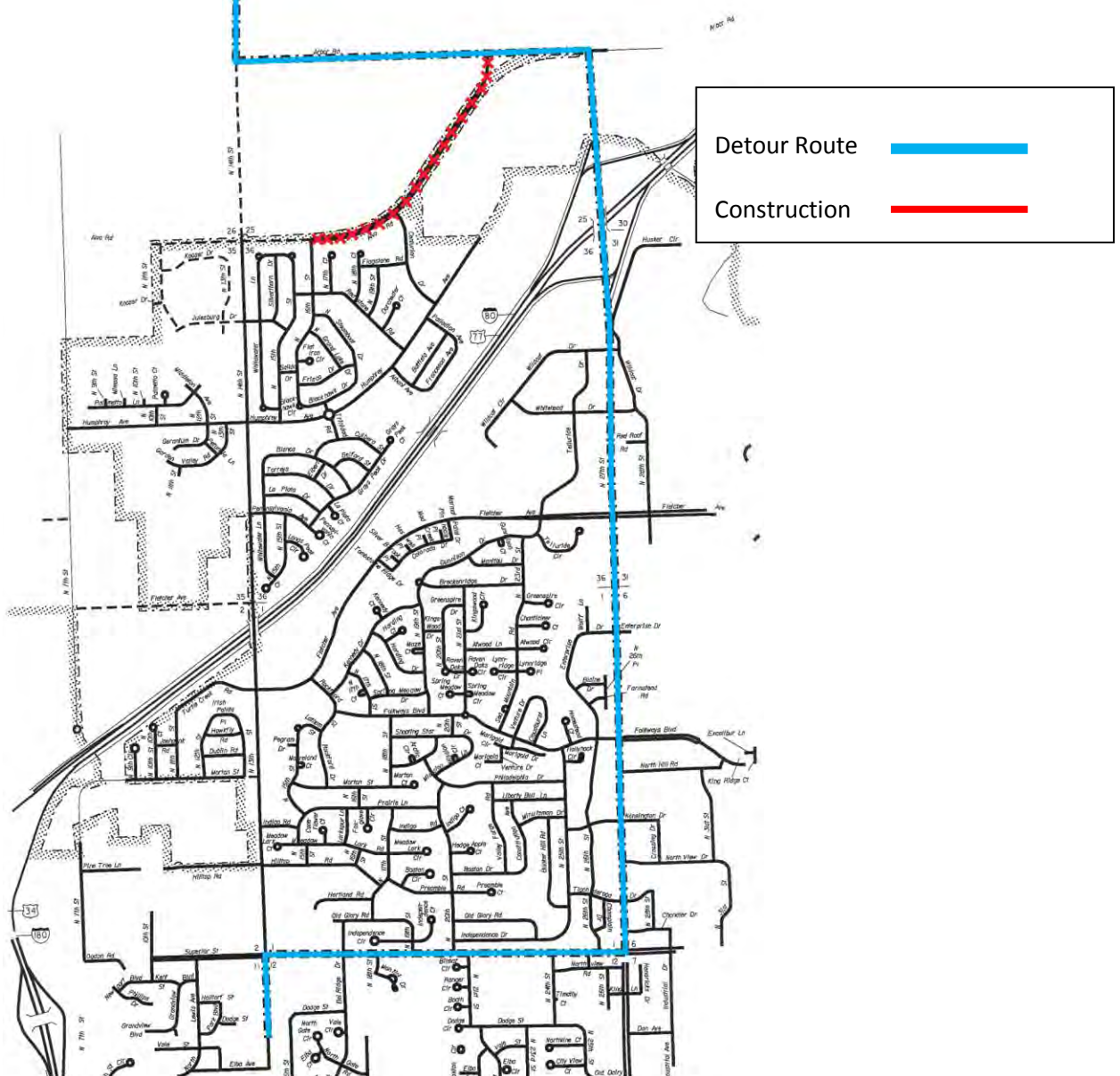
Highway Number & General Location Info		Additional Info – if available – Restrictions – Type of Work <i>REMEMBER to Check 511 TEXT Page for extra information</i>	Date Entered/Updated	District	Anticipated Completion
75	Both directions @ north Jct. US-34	Avenue B closed	5-9-12	2	Summer 2012
77	Both directions @ north Jct. N-109 east of Cedar Bluffs (Otoe Creek Bridge)	Road construction, speed zone, flaggers MAP	3-21-12	1	October 2016
77	Both directions @ Jct. US-30 (Fremont South Bridges)	Road construction, temporary alignment	3-28-12	2	Summer 2013
77	North @ Jct. N-64 southwest of Leshara	Bridge replacement, roadway closed MAP	4-4-12	1	November 2012
81	Both directions @ Jct. N-12	Road construction, lane restriction, 12' width restriction	4-4-12	3	October 2012
83	Both directions @ Jct. US-30 North Platte	Lane restrictions, 12' width restriction	4-11-12	6	Fall 2012
83	Both directions @ Jct. I-80 North Platte Interchange #177	Lane restrictions, 10' width restriction	4-11-12	6	Fall 2012
84	East @ Jct. N-14 and Verdigre Spur S-54A	Roadwork, narrow lanes, speed zone, shoo-fly in place	4-20-11	3	Spring 2012
92	Both directions @ west Jct. N-2	Road construction, lane restriction, 12' width restriction, flaggers and pilot car	4-4-12	6	
103	Both directions @ east Jct. N-33 northeast of Crete	Road construction, lane restriction, 12' width restriction, flaggers and pilot vehicle	3-21-12	1	October 2012
136	Both directions @ north Jct. N-14	Bridge maintenance	4-4-12	4	
136	East @ west Jct. N-4	Lane closure, 12' width restriction	5-2-12	1	June 2012
159	Both directions @ Rulo	Bridge construction	2-3-12	1	
183	Both directions @ Jct. Comstock Spur S-21C	Road construction on shoulder	5-16-11	6	Fall 2011
183	North @ Kansas-Nebraska State Line	Road construction, 10' width limit	4-25-12	7	
183	Both directions @ south Jct. N-91 south of Taylor	Road construction, flaggers and pilot car, 12' width restriction	4-18-12	6	May 2012
281	North @ Spencer	Starts May 10 , road construction, flaggers and pilot vehicles, 12' width restriction	5-2-12	8	August 2012
281	North @ Webster-Adams County Line	Starts May 14 , paving operations, 12' width restriction, flaggers, lane restriction	5-9-12	4	
283	North @ Jct. N-23 in Elwood	Road construction, lane restriction	5-9-12	7	
283	Both directions @ Jct. US-30 in Lexington	Road construction, traffic signals, 10' width restriction	4-11-12	6	Fall 2011
370	Both directions @ Jct. US-6 & N-31 (In Gretna)	Lane closures, temporary traffic signals	3-23-11	2	September 2013
L80E	North @ Jct. US-6 in Friend	Road construction, 11' width restriction	5-9-12	1	
S40D	Both directions @ Jct. N-11	Bridge closed, Detour – use I-80, Alda Road and Rosedale Road	9-26-11	4	

Posted Detour for 14th Street Bridge over I-80 – Lincoln - Detour

The contractor's schedule for NDOR's 14th Street Bridge over I-80 shows it is on schedule. The work consists of a Bridge Replacement and is anticipated to be completed in the summer of 2012.

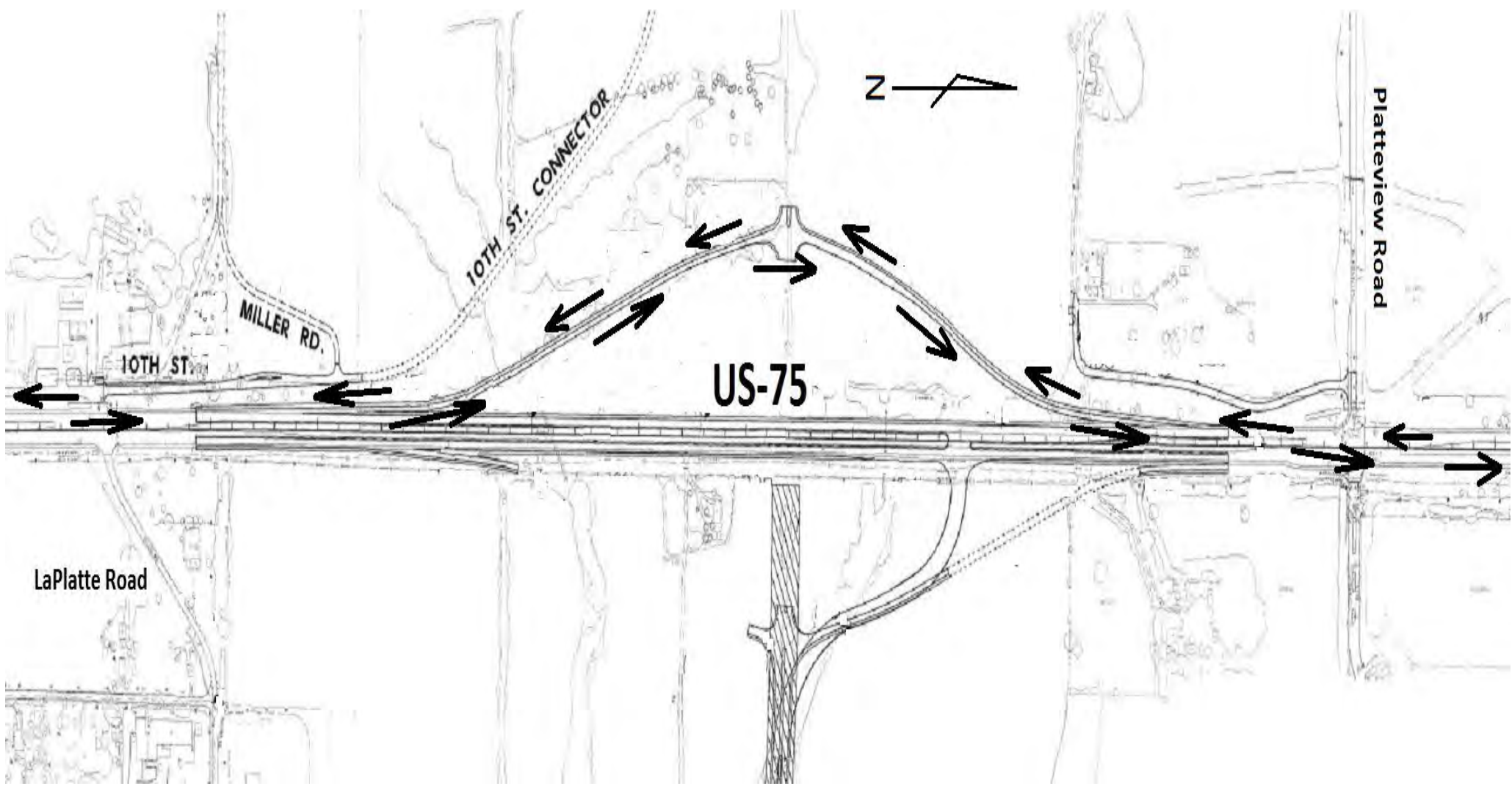
Although the bridge will be completed, it will not be placed in service until two City of Lincoln projects are completed. These projects include a roundabout at 14th and Superior and a surfacing project on the north side of our bridge project.

You will need to contact the City of Lincoln Public Works Dept. about completion dates for those.



Southbound traffic on 14th Street will be detoured East on Arbor Road to 27th Street, then South on 27th to Superior, then West on Superior to 14th.

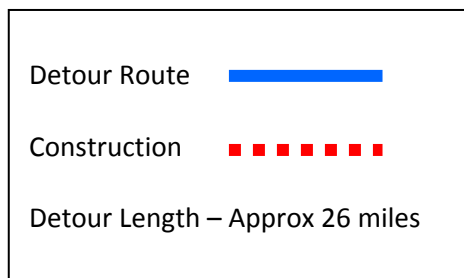
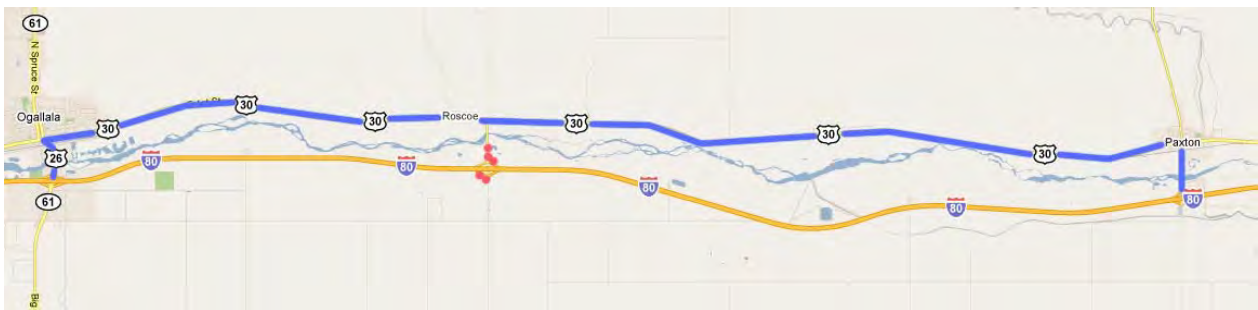
Northbound traffic on 14th Street will be detoured on a reverse of the above route .



Posted Detour for I-80 Exit 133 to Roscoe

Exit 133 will be closed – To travel to Roscoe use the Detour Route Below.

Beginning April 3, 2012 until Fall 2012, All traffic going to Roscoe will be detoured to Hwy 30 at the Paxton & Ogallala Interchanges.






NOTE: This detour is ONLY for those traveling to Roscoe

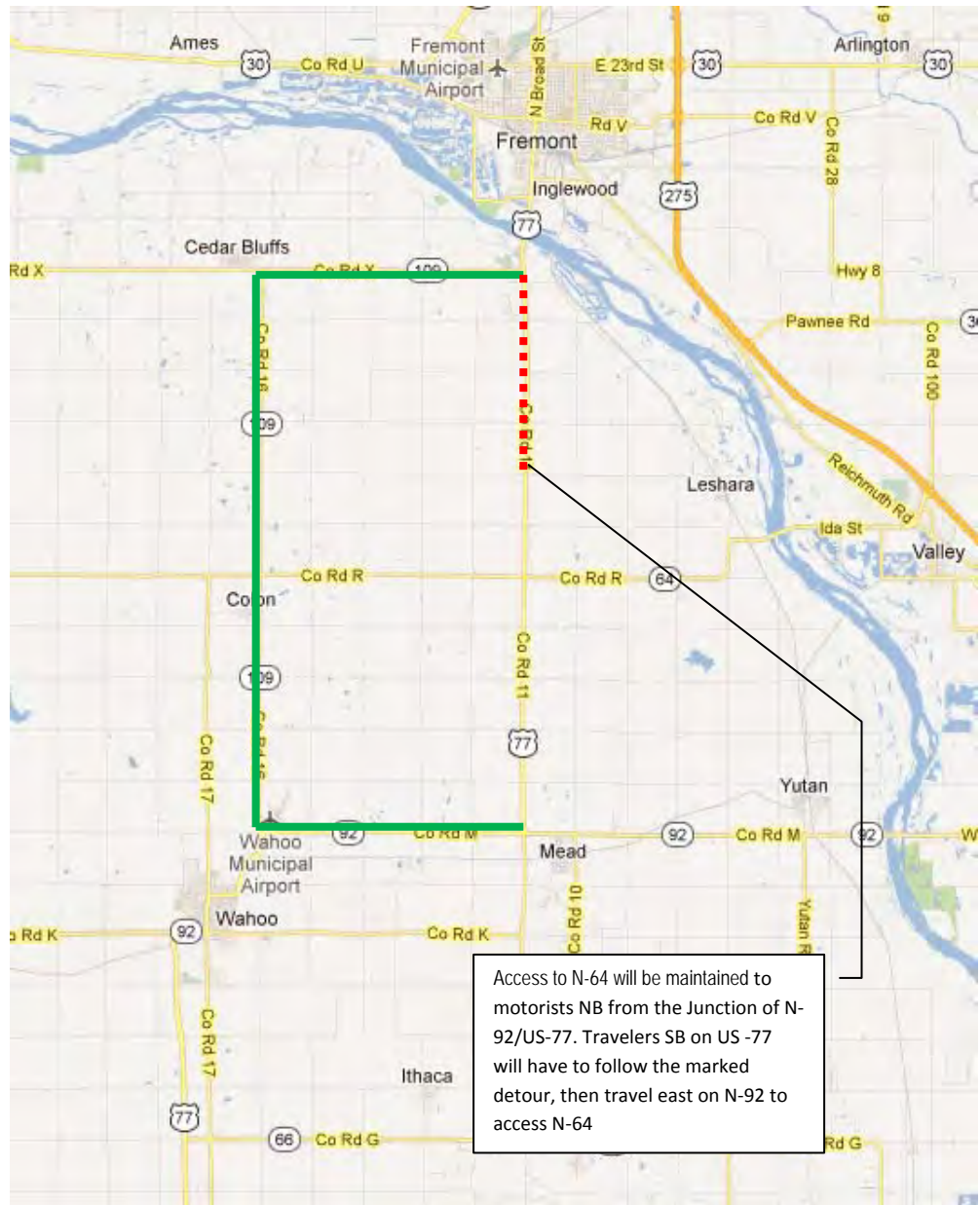
Roscoe Interchange will be closed thru this construction.

US 77 Detour for Otoe Creek Bridge Project

Begins week of April 9, 2012 (weather permitting) and ends in the fall of 2012.

Closure 
Marked Detour 

NORTH 



The project begins at the junction of US-77/N-92 and continues north to the Junction of US-77/N-109, south of Fremont.

US-77 will be **closed to thru traffic** during construction.

Northbound US-77 motorists will be detoured onto N-109, at Wahoo, north on N-109 for 11-miles, then east 5-miles on N-109 back to US-77, near Fremont. Southbound motorists will be detoured on to N-109 south of the Platte River, 5 miles west, and then south for 11 miles to US-77, at Wahoo.

Access north to N-64 will be maintained for motorists at the junction of N-92/US-77. Travelers southbound on US-77 will follow a marked detour, then travel east on N-92 to access N-64.

District Phone Numbers

District 1	(402) 471-0850
District 2	(402) 595-2534
District 3	(402) 370-3470
District 4	(308) 385-6265
District 5	(308) 436-6587
District 6	(308) 535-8031
District 7	(308) 345-8490
District 8	(402) 387-2471